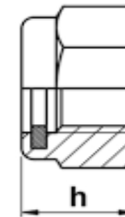
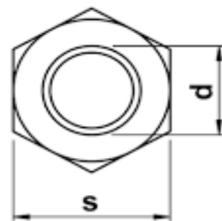
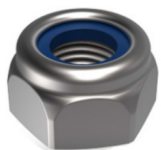


---

## PORCA SEXTAVADA TRAVANTE • Métrica • DIN 985 (\* ISO 10511)

---



Nominal d	M3	M4	M5	M6	M8	M10	M12	M14	M16	M18	M20	M22
Chave s	5.5	7	8	10	13	17(*16)	19(*18)	22(*21)	24	27	30	32
Altura h	4,0(*3,9)	5.0	5.0	6.0	8,0(*6,76)	10,0(*8,56)	12(*10,23)	14,0(*11,32)	16,0(*12,42)	18.5	20,0(*14,9)	22.0

Material: Aço Inoxidável • Rosca Conforme DIN 13