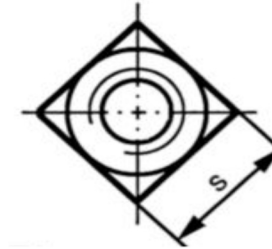
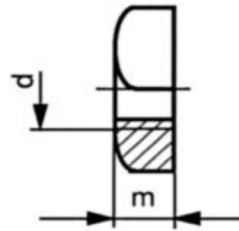
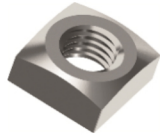


---

## PORCA QUADRADA • Métrica • DIN 557

---



Nominal d	M5	M6	M8	M10	M12	M16	M20
Chave s	8	10	13	17	19	24	30
Altura m	4.0	5.0	6.5	8.0	10.0	13.0	16.0

Material: **Aço Inoxidável**

Rosca Conforme DIN 13