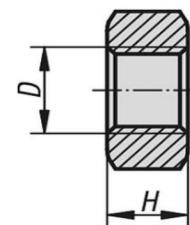
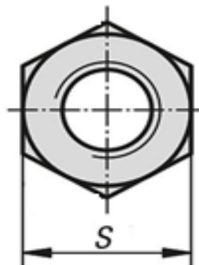
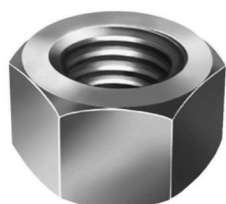


PORCA SEXTAVADA • Métrica • DIN 934



Nominal D	M3	M4	M5	M6	M8	M10	M12	M14	M16	M18	M20	M22	M24	M30
Chave S	6	7	8	10	13	17	19	22	24	27	30	32	36	46
Altura H	2.4	3.2	4.0	5.0	6.5	8.0	10.0	11.0	13.0	15.0	16.0	18.0	19.0	24.0

Material: Aço Inoxidável Rosca Conforme DIN 13